



# Strawbees.

activity book



LEARN STRAWBEES BASICS,  
SKETCH YOUR IDEAS AND  
START CREATING!

IMAGINATION

KIT

# DEAR MAKER,

Every project you will create with this kit is a process. We believe it is important to encourage multiple attempts to create something new. Through the process of experimentation, testing ideas, prototyping then modifying your project the result that is not important, but the journey and exploration. We encourage everyone to curiously embrace our activities with a great sense of enthusiasm and humor because we believe that problem solving with a positive attitude fosters creativity.

**When you first open the box** the materials within allow your ideas and imagination take shape through sketching, drafting a list, free building, or help you find the process that works for you. **The cards serve as inspiration to get started; we encourage you to use your imagination and modify your solution for a different outcome each time.** You can find more activities and support for Strawbees construction-techniques with other materials at [learning.strawbees.com](https://learning.strawbees.com).

Welcome to our community of endless ideas put together solely to support your creativity. If you have any questions, we will be happy to address them at [strawbees.com/support](https://strawbees.com/support).

Happy making!

**DREAM BIG, BUILD BIGGER!**

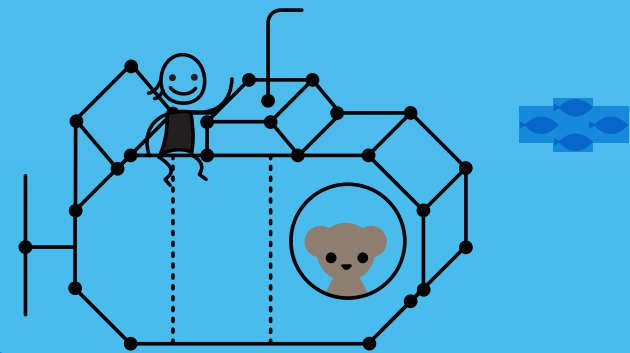


# FIRST TRICKS

Before you start going crazy with your new Strawbees kit, let's take a look at some basic tips and tricks that will help you build smart!

If you're a newbie to Strawbees, these are good to know so stay here for a while and play around.

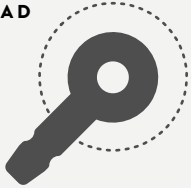
STRAWBEES CONNECTORS  
CONNECTING TO STRAWS  
CONNECT & LOCK  
LOCKING STRAWS  
JOINT



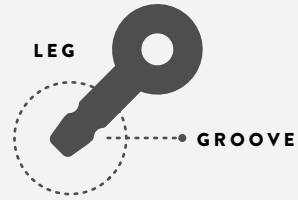
## STRAWBEES CONNECTORS

Strawbees are connectors that can be used for combining straws, connectors, cardboard, and many types of materials.

HEAD

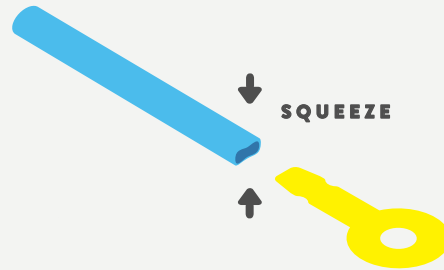


LEG



## CONNECTING TO STRAWS

Squeeze the opening of the straw for easy insertion.



## CONNECT & LOCK



Slip the head into the groove of the leg and **listen for the click**. This will secure connectors and allow rotation.

OR

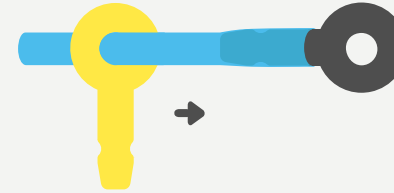


Push the leg **all the way through** the head to lock in place. The connectors are limited in rotation.

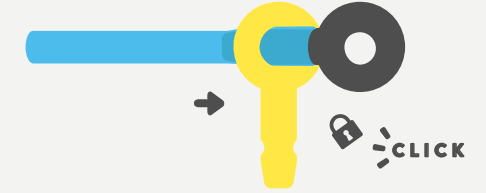
## LOCKING STRAWS

You can lock the straws in place to prevent slipping.

1.



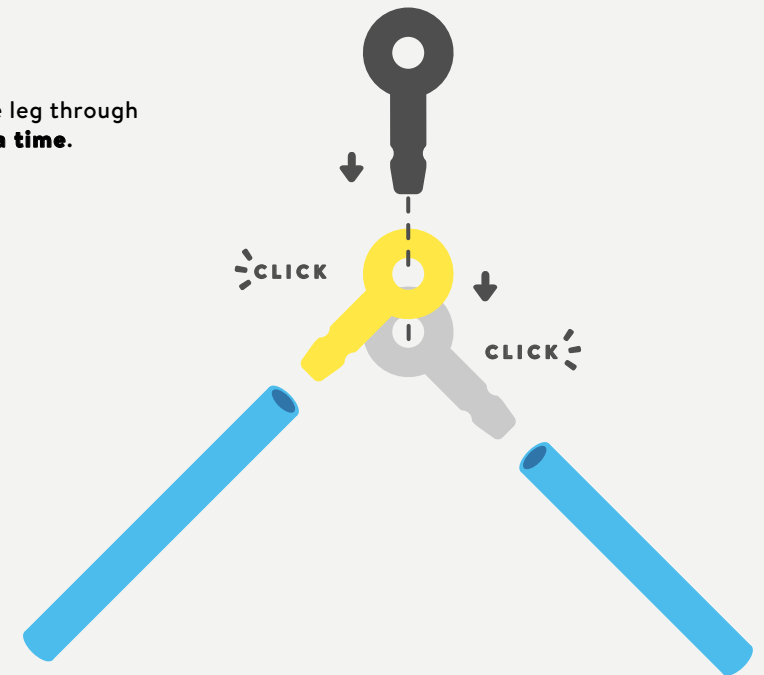
2.



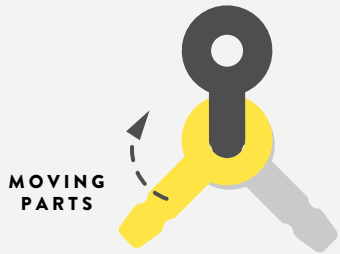
Snap onto the **groove**.

## JOINT

Push the Strawbee leg through each head **one at a time**.



## MOVING JOINT



Snap the heads of connectors into the groove of another to create a fully rotating joint.

## LOCKED JOINT

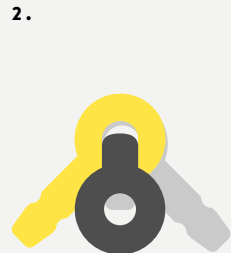


Push the leg all the way through to create a joint with limited movement.

## FRICTION LOCK



FOLD THE HEAD ALL THE WAY TO THE BACK



PUSH THE LEG THROUGH THE HOLE TO LOCK

**With the moving joint** fold the head over to the other side and snap it into the groove to create a friction lock. The legs will shift and hold in different positions.

# BASIC FORMS

Before you start going crazy with your new Strawbees kit, let's take a look at some basic tips and tricks that will help you build smart!

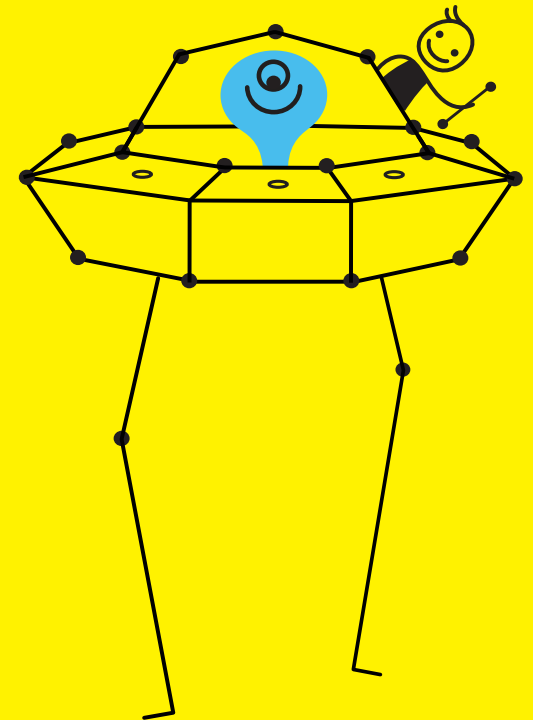
If you're a newbie to Strawbees, these are good to know so stay here for a while and play around.

PYRAMID

CUBE

PUPPY

ARM

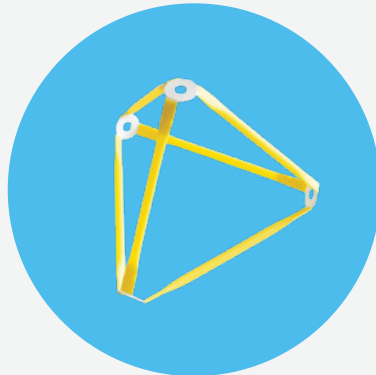


# PYRAMID

Pyramids are also known as tetrahedrons, fancy name for this pointed fella. Pro tip: Bend the Strawbee arms to make the edges sharper.

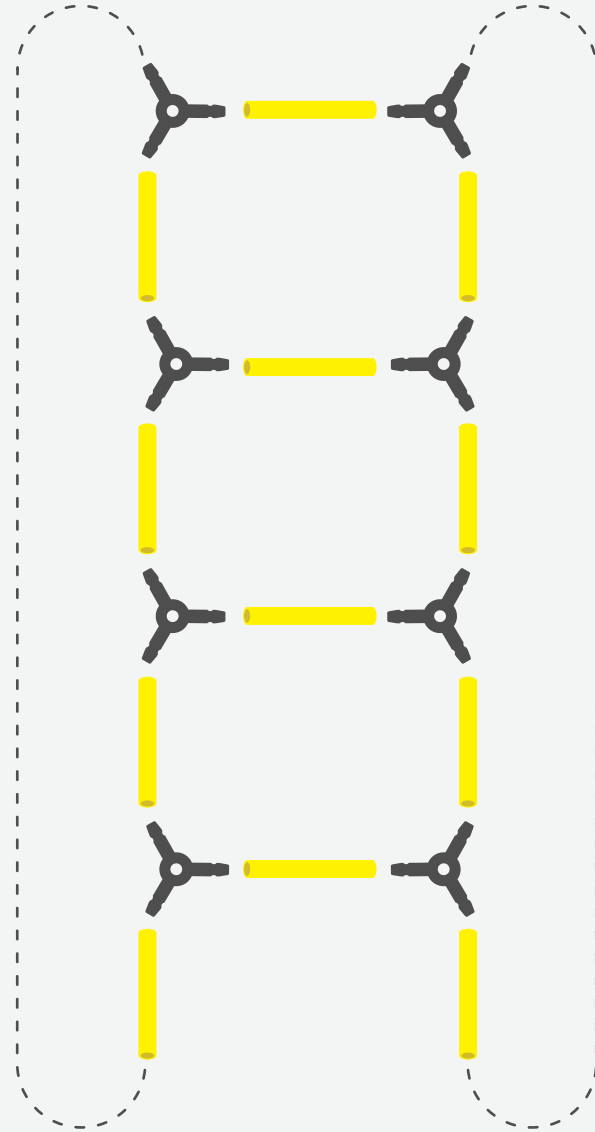


It looks like this in →  
the end!

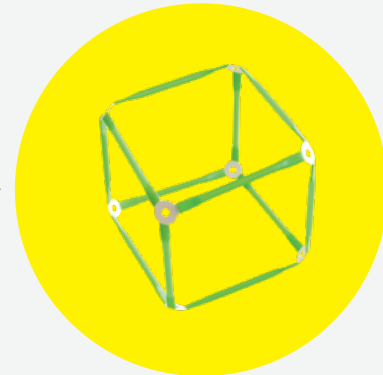


# CUBE

You can turn a pyramid into a cube by adding some straws and Strawbees. They are perfect to stack on top of each other.

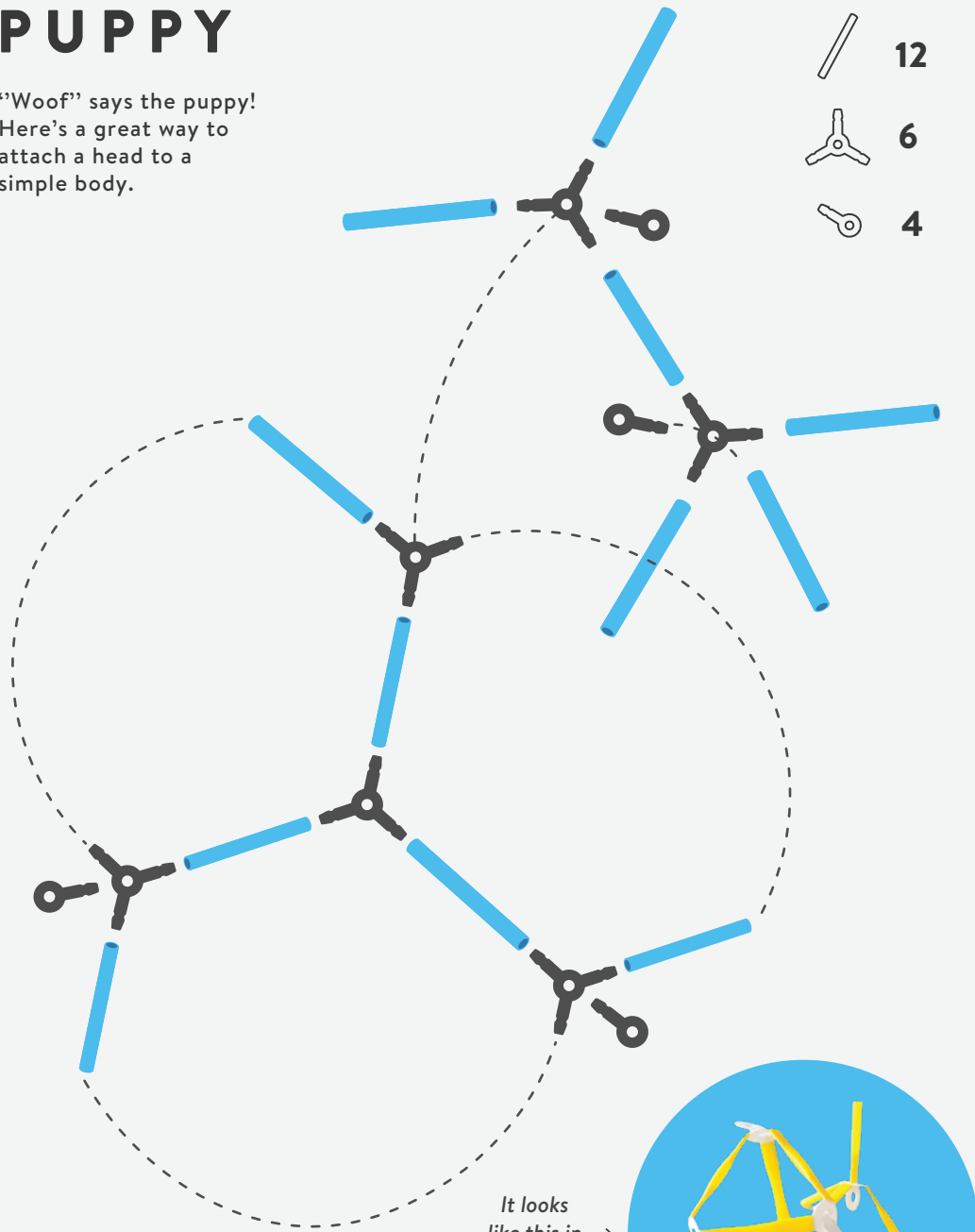


It looks like this in →  
the end!



# PUPPY

“Woof!” says the puppy!  
Here’s a great way to  
attach a head to a  
simple body.



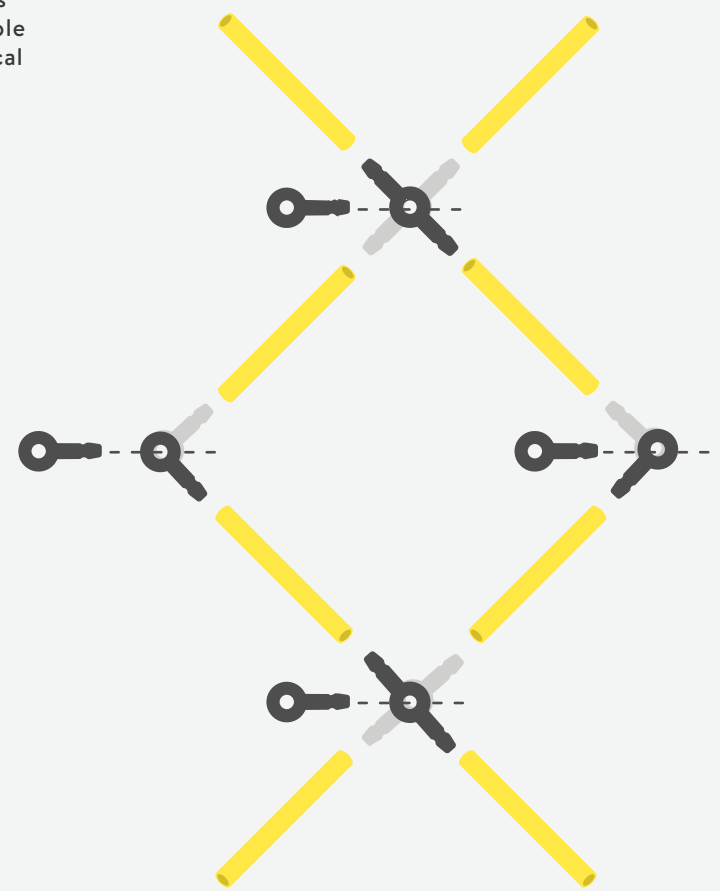
- 12 (blue stick)
- 6 (three-way joint)
- 4 (key joint)

It looks like this in the end! →



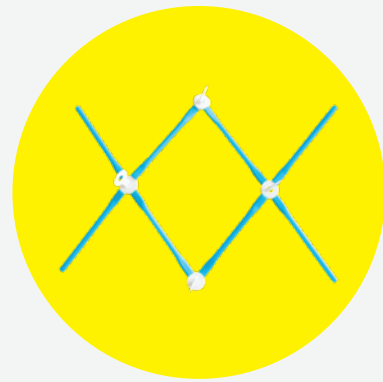
# ARM

You can make an arm in  
so many ways that it's  
even hard to count! This  
is a simple but very stable  
way to build a mechanical  
articulated arm.



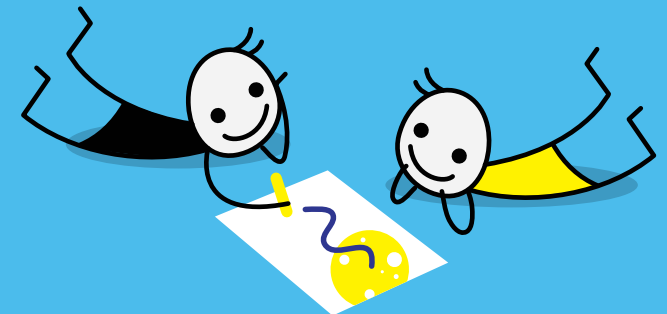
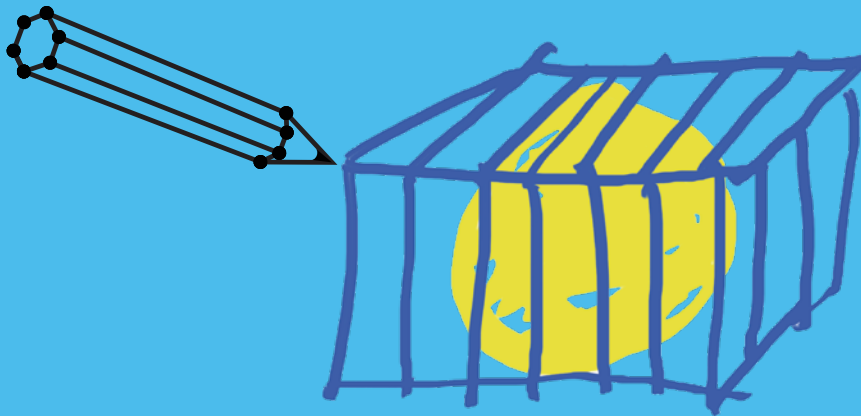
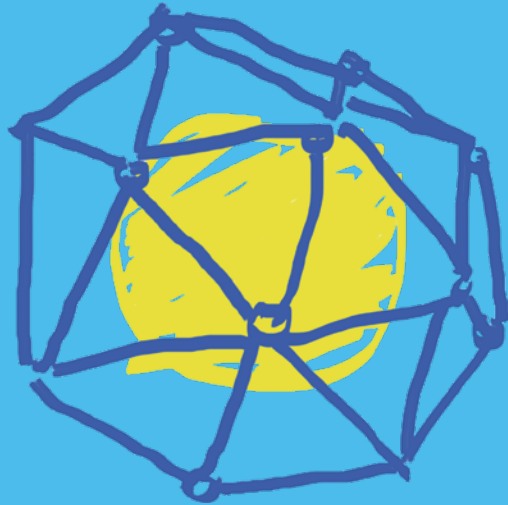
- 8 (yellow stick)
- 8 (three-way joint)
- 4 (key joint)

It looks like this in the end! →



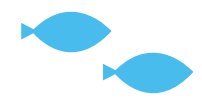
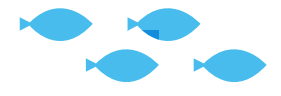
# YOUR SKETCHBOOK

Every small creation or big invention begins with a simple idea. The idea is then translated into a sketch which is made into a prototype to see if the idea works. Pick up a card, start sketching lots of ideas and once you've picked your favourite idea, start building it. Don't underestimate drawing because drawing is a way of thinking. It also helps you plan your next step. The rest of this book is your sketchbook don't be afraid to let your imagination flow.







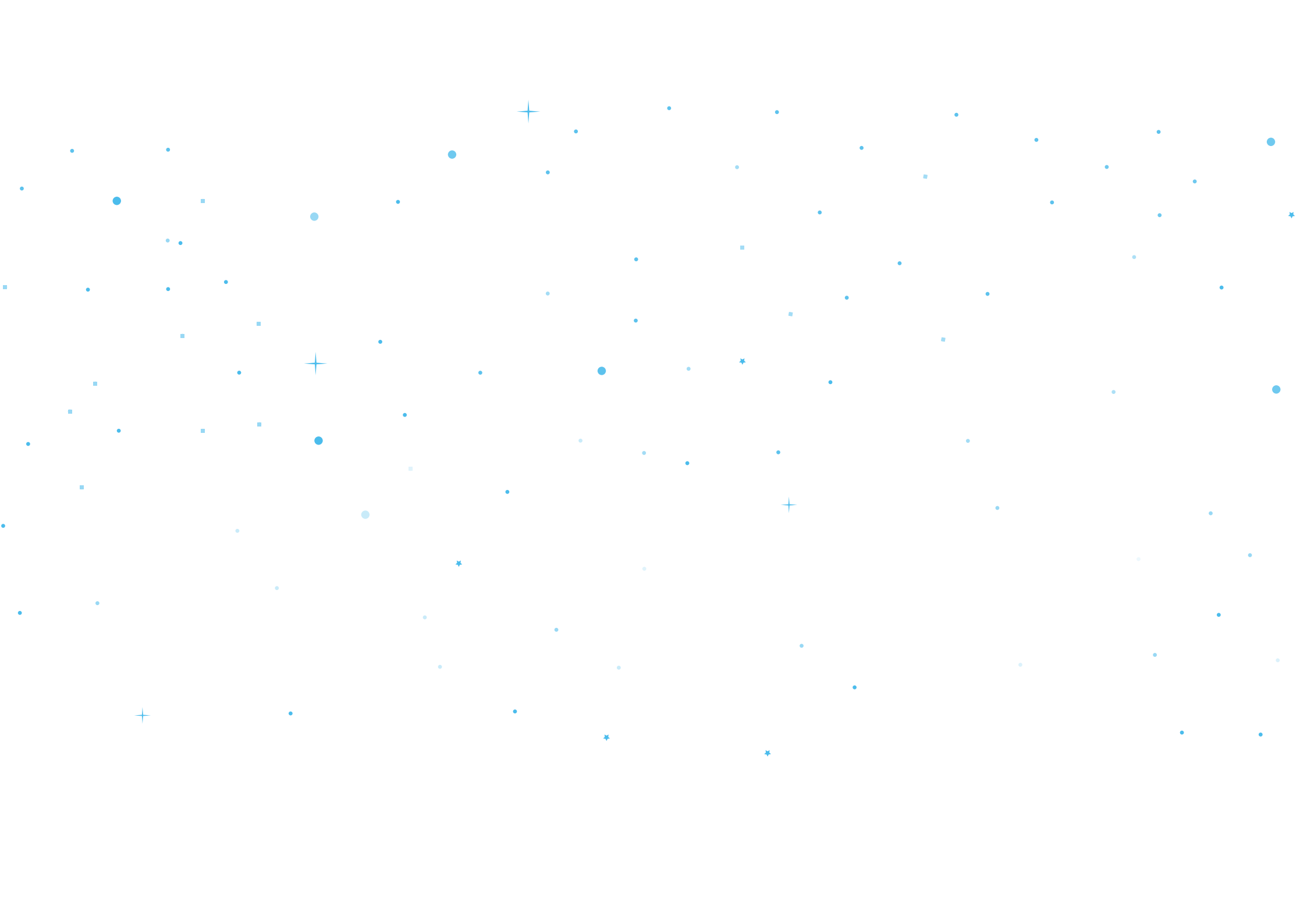








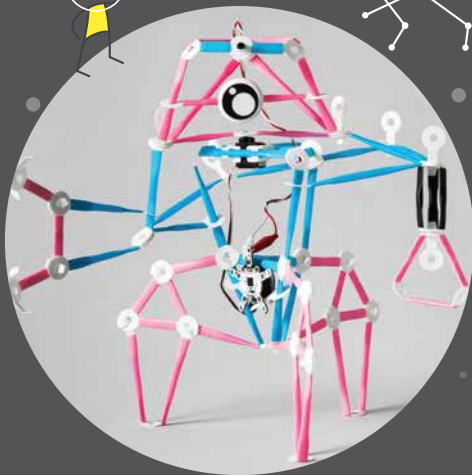








# MORE FROM THE STRAWBEES UNIVERSE



## **CODING&ROBOTICS KIT**

The perfect kit to learn electronics, mechanics and programming.



## **STRAWBEES SCHOOL KIT**

A favorite in classrooms, maker spaces and science centers around the world, The kit provides enough pieces for large groups to build many giant projects!



**STRAWBEES.COM**  
**@STRAWBEES**  
> Inspiration, tips & tricks