



Qobo Series Course

Section 10:
《 Moai Statue 》

Curriculum objectives

Knowledge and skill

1. Learn new cards: yellow light card, blue light card, green light card.
2. Understand the origin of Easter Island's name.
3. Know why Moai statue was constructed.

Process and method

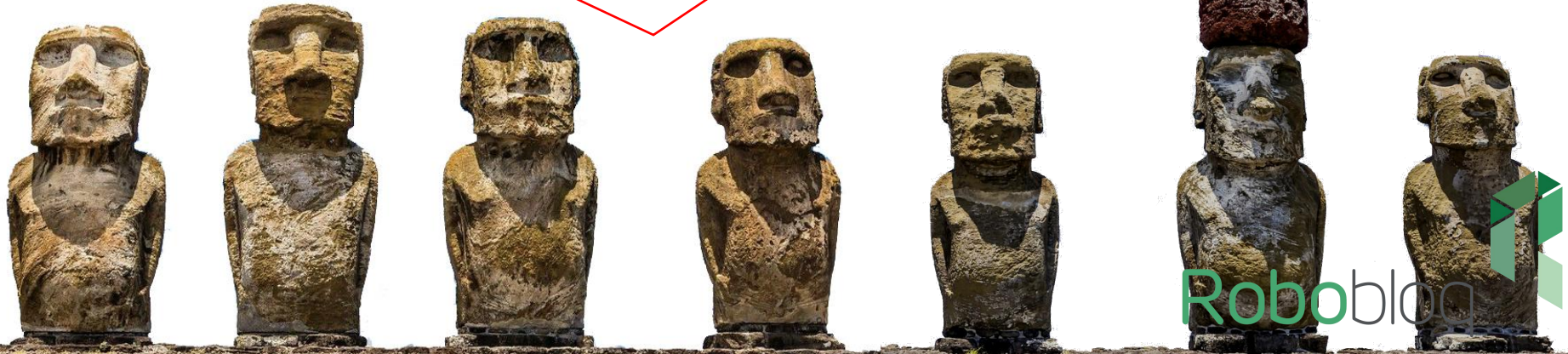
1. Exercise children's ability to recognize colors by using different color-light cards.
2. Stimulate children's ability of exploring and thinking by cognizing Moai Statue

Emotional attitude and values

1. Encourage children to know history and culture by the introduction of Moai Statue.

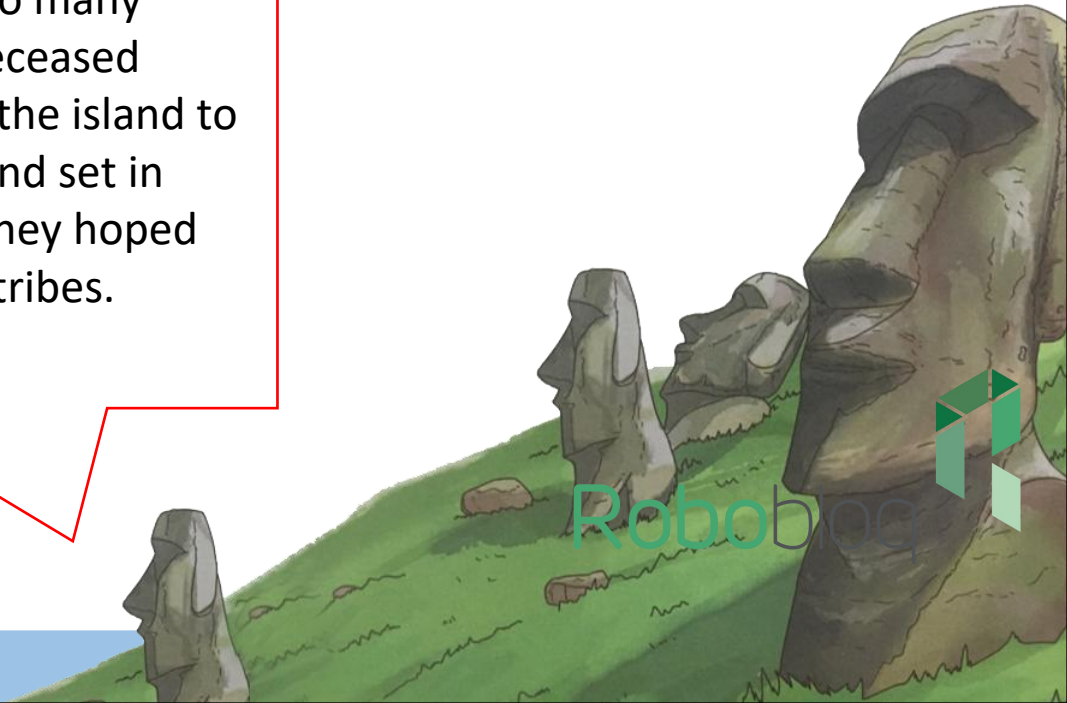
Curriculum introduction

There is an alone island in the Pacific Ocean. The most popular attraction in this mysterious island is the giant statues that are scattered all over the place. These statues are strange in shape and have different sizes. They turn their back to the ocean, and every statue's character is serious. They gaze at the island silently.



Curriculum introduction

It is said that the inhabitants in this island built domicile about 1000 years ago. Afterward, the inhabitants in this island split into many tribes. In order to memories their deceased chieftains, each tribe used stone on the island to carve their chieftain's appearance, and set in seaside, back to their countryside. They hoped that these statues can protect their tribes.



Curriculum introduction

This island was discovered when a Holland boat train landed here several hundred years ago. The captain named it "Easter island" because that day was Easter.

Moai Statues' eyes originally were inlaid by coral and conch, but now most parts have dropped. Some statues' head still have the "hat" that was made using red stone.

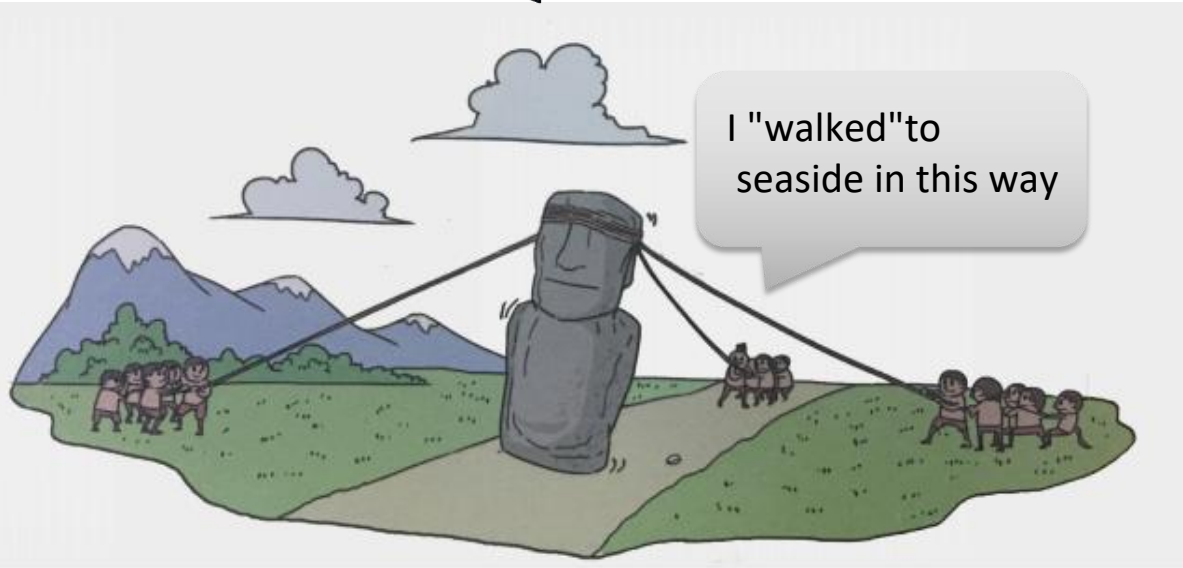
This "big hat" called Pukau, it is said that it is an hair style.



Curriculum introduction

How were these giant statues transported to seaside?

I "walked" to seaside in this way



According to archeologists' opinion, these giant statues probably "walked" to the seaside by themselves.

The transportation of Moai Statues was done by around 20 inhabitants using three rope to bind statue, pull each other, move forward inch by inch, finally reached the seaside.



Curriculum introduction



Moai Statues protect their countryside on the island. After the rain, the rainbow appears in the sky.



Look, the rainbow



Card explanation

light card:

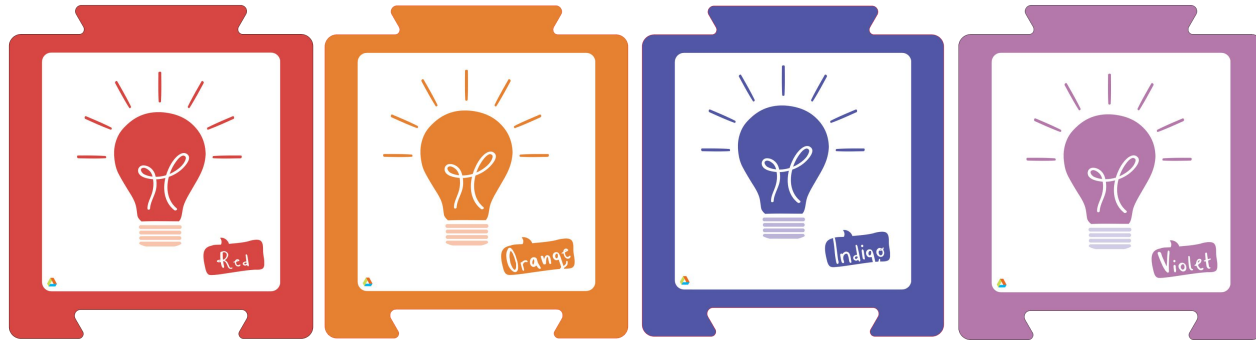
Learn to use red, orange, cyan, and purple light card.



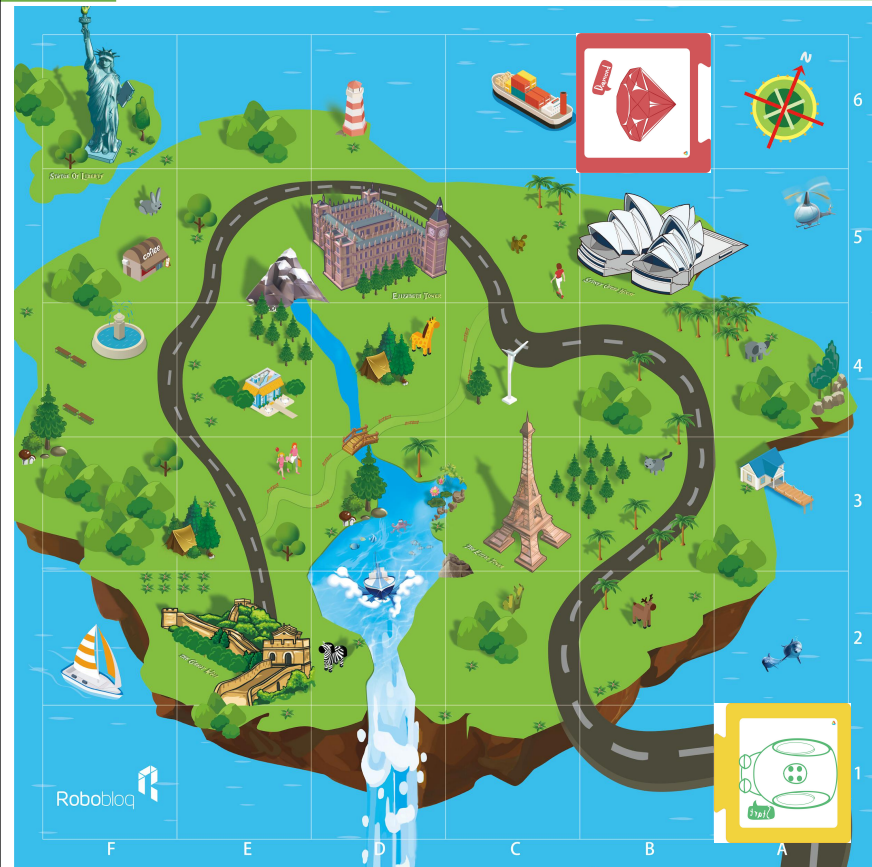
Children, do you know how many kinds of colors does a rainbow have?

Actually, rainbow have seven kinds of color from outside to inside, they are red, orange, yellow, green, blue indigo, and violet..

Our Qobo also can light these seven kinds of colors. We learned yellow, blue, and green light card in the previous lesson. Today, we will learn remaining four color light cards.



Hands and brains



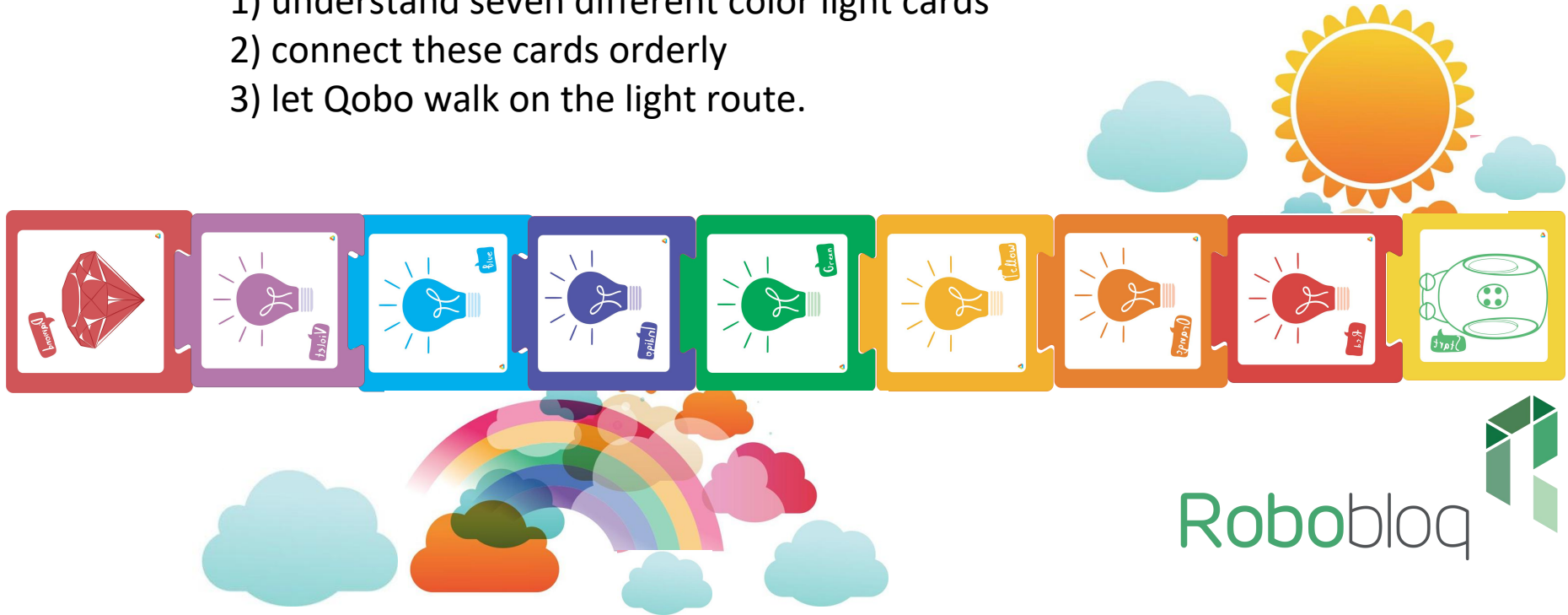
Qobo needs to use seven kinds of color light cards this time to reach Easter island. according to the order of rainbow color that we require include red, orange, yellow, green, cyan, blue, purple light lamp.

Children, take out Qobo's card, build a "rainbow" road to see the mysterious statues that protect island.

Hands and brains

Children,

- 1) understand seven different color light cards
- 2) connect these cards orderly
- 3) let Qobo walk on the light route.



Task challenge



Combine cards that we learned, such as a forward card, turning card, etc. to design a diverse route for Qobo, and follow Qobo to know different colors.

Copyright information

This copyright of this material belongs to our company. Unauthorized dissemination or plagiarism will be investigated and legal responsibility will be affixed. The company has the final right of interpretation.

Company: Robobloq Co., Ltd

Address: Room 208, Building B53, Zhongchuang Industrial Park, Liuxian Avenue, Taoyuan Street, Nanshan District of Shenzhen

E-mail: hello@robobloq.com

Telephone: + 86-0755 -26926929

Website: <http://www.robobloq.com>

