



## Qobo series course

Section 5  
Earth Home

# Curriculum objectives

## **Knowledge and skill**

1. Learn to use train card, police car card and river card;
2. Understand our earth, know the meaning of earth's revolution and rotation;

## **Process and methods**

1. Driven by tasks, learn cards in practice and exercise operation ability of practice;

## **Emotional attitude and values**

1. Experience colorful earth, stimulate the love to earth.

# Curriculum introduction

In the vast universe, earth is just a very small planet, but it is our home on which to live for us.

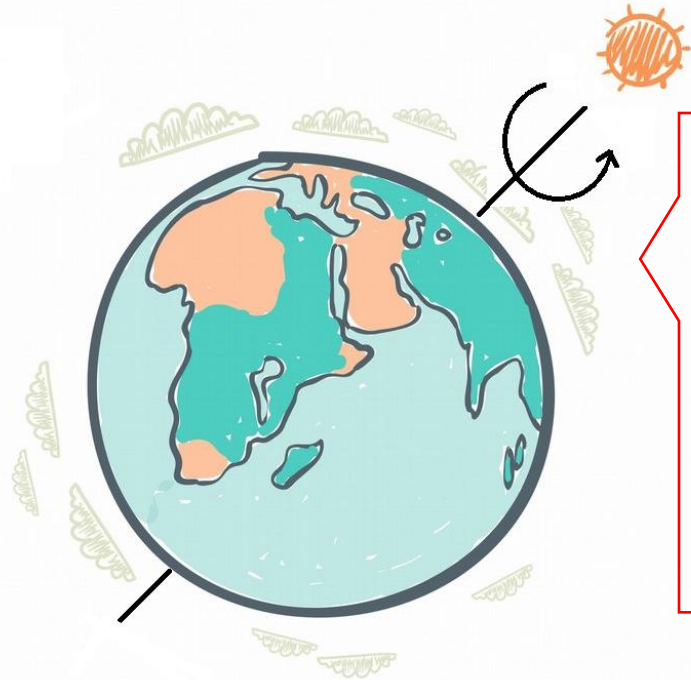
Earth, which was seen from space, is a beautiful sphere, but it is not a perfect sphere because of the effect of gravity.



Roboblog

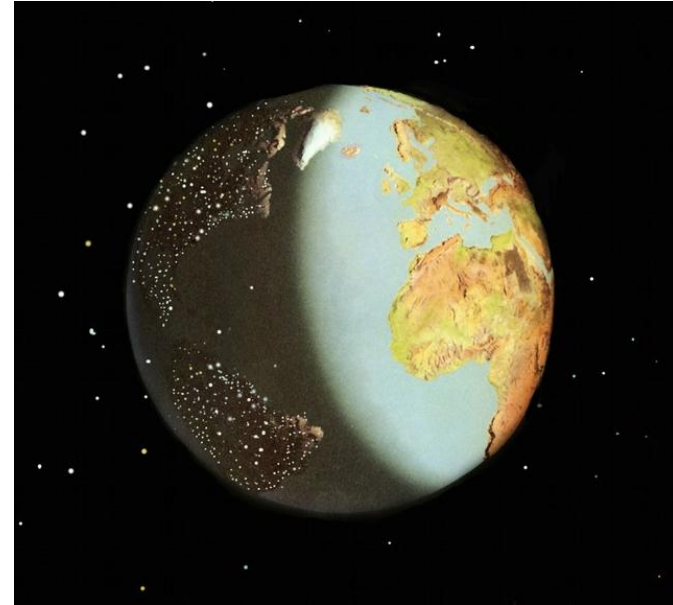


# Curriculum introduction



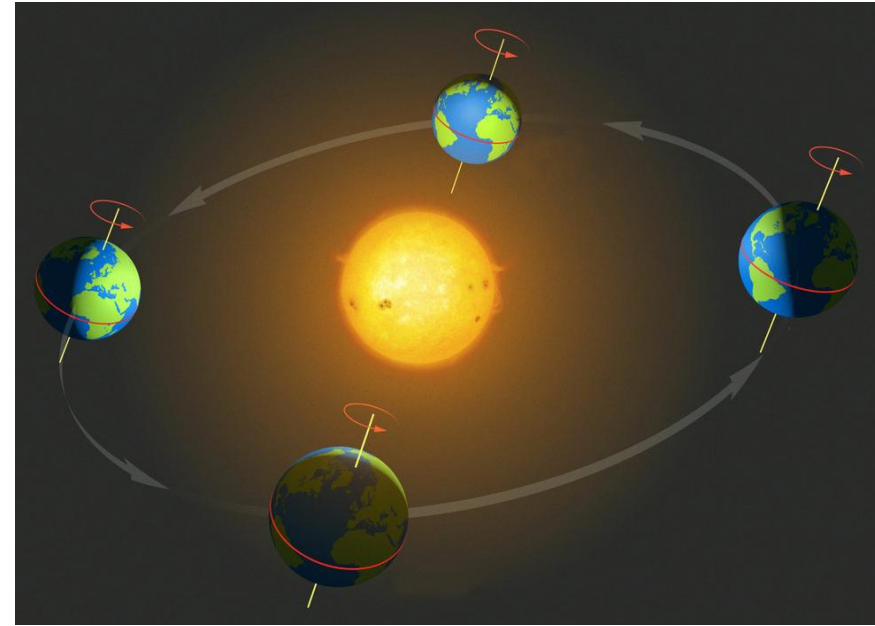
Do you know  
why there are  
daytime and night?

Because earth  
does rotation,  
everyday sun rises  
from east in the  
morning, and set to  
west in night.

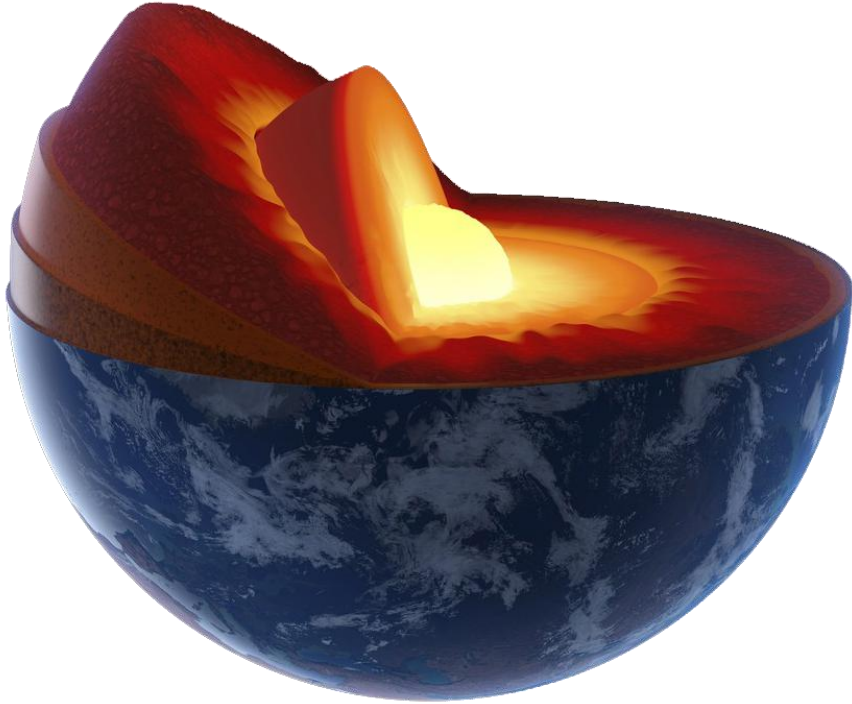


# Curriculum introduction

Earth does revolution revolving round sun, but rotation axis of earth has a little lean, therefore, received sunlight exposure is different in different places of earth, so our earth have the change of spring, summer, autumn, winter.



# Curriculum introduction

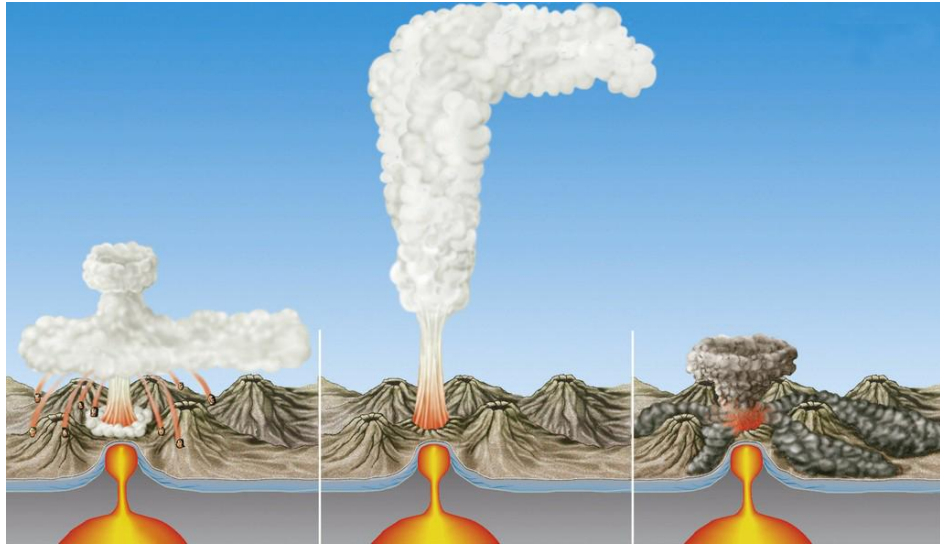


At the beginning after forming, earth is a burning fireball, afterwards, it chill down slowly, but the core of earth is still parched.

If we uncover the earth's crust, we can find center of earth is high temperature that same as volcanic magma.

# Curriculum introduction

Magma in inner of earth also can angry, it just like a child, when it "angry", it will appear volcano eruption, emit parched magma.



# Card explanation

Earth consists of land and ocean, there are towering high mountains, extensive grasslands, human being and animals live in earth. Smart human being invent sundry vehicles to go to farther place.





# Card explanation

Learn about train card, police car card, river card:

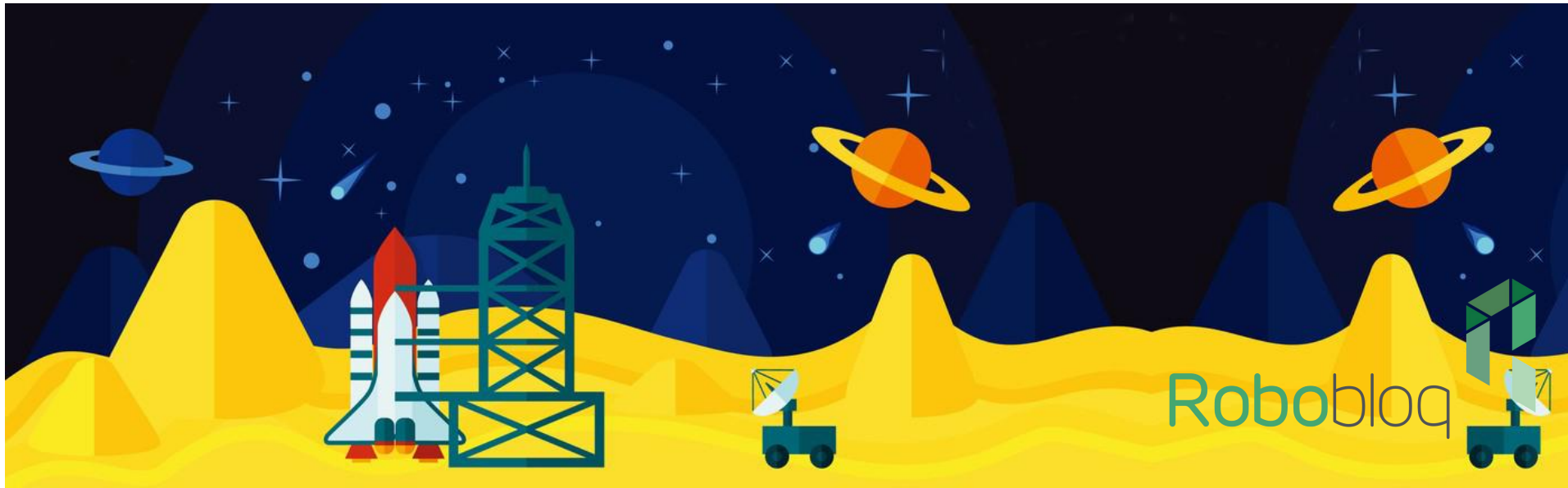
When Qobo is on the train card and police car card, Qobo will send out effect of train whistle and alarm, and move forward one step.

When Qobo meet river card, it will drowning, so we need to let Qobo avoid river card.



# Hands and brains

Qobo wants to follow rocket that was launched to space, but the launch base is far away from here , what's more, there are block of high mountains and rivers, what ideas do we have that can help Qobo?



# Hands and brains



Train can lead us to go through high mountain tunnel, across block of river, police car can help Qobo get into rocket launch base.



Roboblog



# Hands and brains



There are two rivers that block road in route, we need to use train card to let Qobo advances fleetly, take police car get into launch base in destination.



# Task challenge



If Qobo's journey is at night, what card can we use to help Qobo?

Using Lego blocks, help Qobo to build a device that can keep out wind and rain.

# After-class sharing

Children, do you know why there are spring, summer, autumn, winter?

What cards do we learned about? What special character does river card has?



# Copyright information

The copyright of this material belongs to our company. Unauthorized dissemination or plagiarism will be investigated and legal responsibility will be affixed. The company has the final right of interpretation.

**Company:** Robobloq Co., Ltd

**Address:** Room 208, Building B53, Zhongchuang Industrial Park, Liuxian Avenue, Taoyuan Street, Nanshan District of Shenzhen

**E-mail:** hello@robobloq.com

**Telephone:** + 86-0755 -26926929

**Website:** <http://www.robobloq.com>

