

# Circulatory System Quiz

A note to teachers

This resource is recommended for use in two ways:

1. As the answer scheme to the Circulatory System Challenge cards. Using the challenge cards, students discover the answers to each question as they are using the Virtuali-Tee app. Downloads are available in the teacher resources repository <https://drive.google.com/drive/folders/17N-hPZnEAdBwevuxAYoTiyasNatYQM9?usp=sharing>
2. As a group quiz after using the Virtuali-Tee app.



# Circulatory System



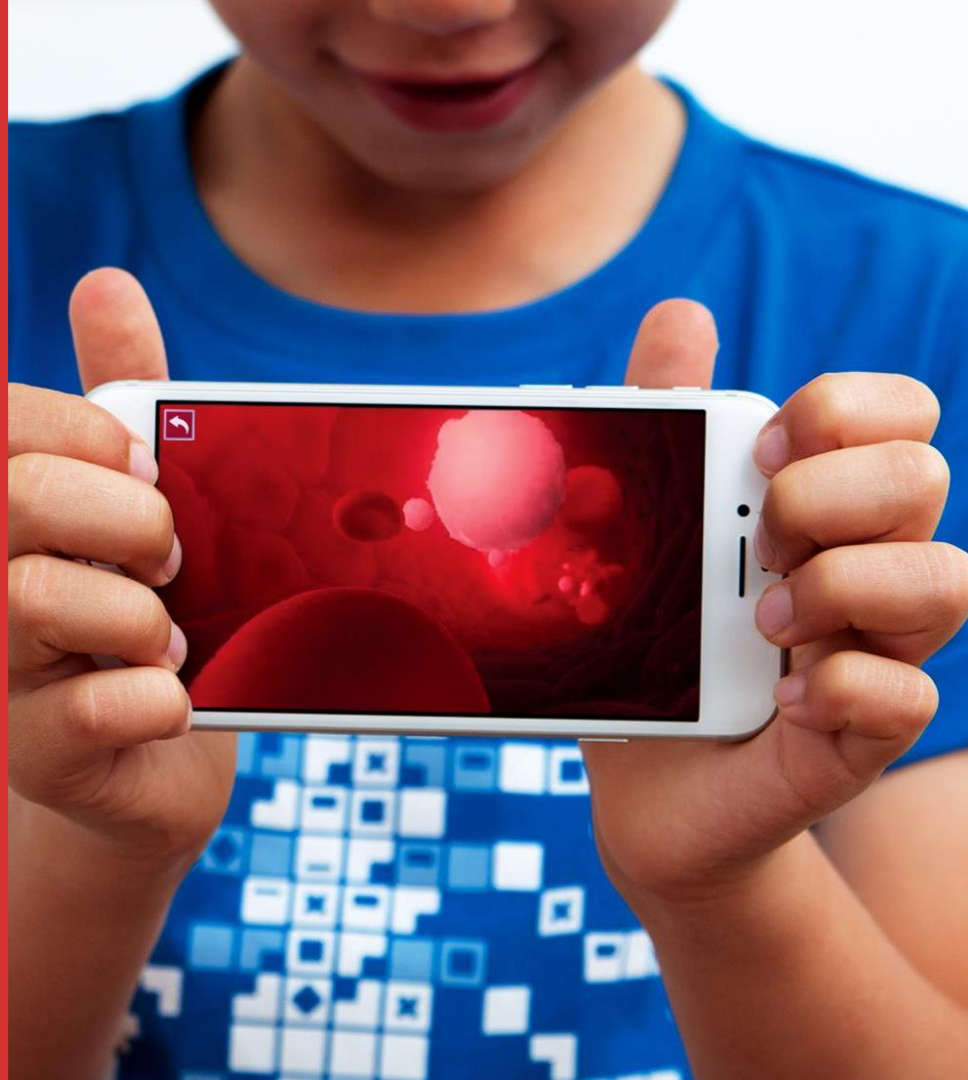


## Question 2

Blood that enters the lungs to receive oxygen is known as ...

- A. Deoxygenated blood
- B. Oxygenated blood
- C. Detoxified blood
- D. Retoxified blood

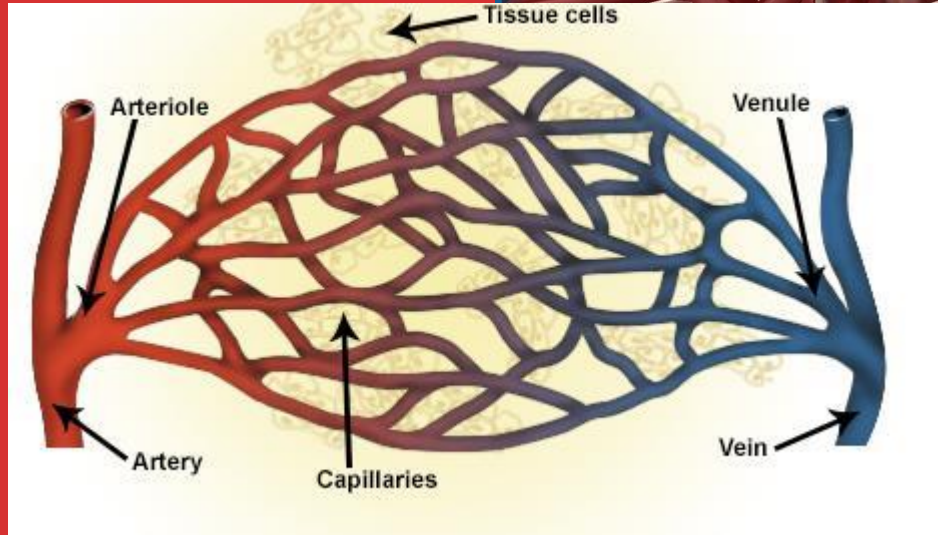
The blood has had oxygen removed and is therefore “de” oxygenated.



# Question 3

Which one of the following is in the correct order of blood flow:

- A. Vein, artery, arteriole, capillary
- B. Vein, arteriole, capillary, artery
- C. Artery, arteriole, capillary, vein
- D. Artery, capillary, vein, artery



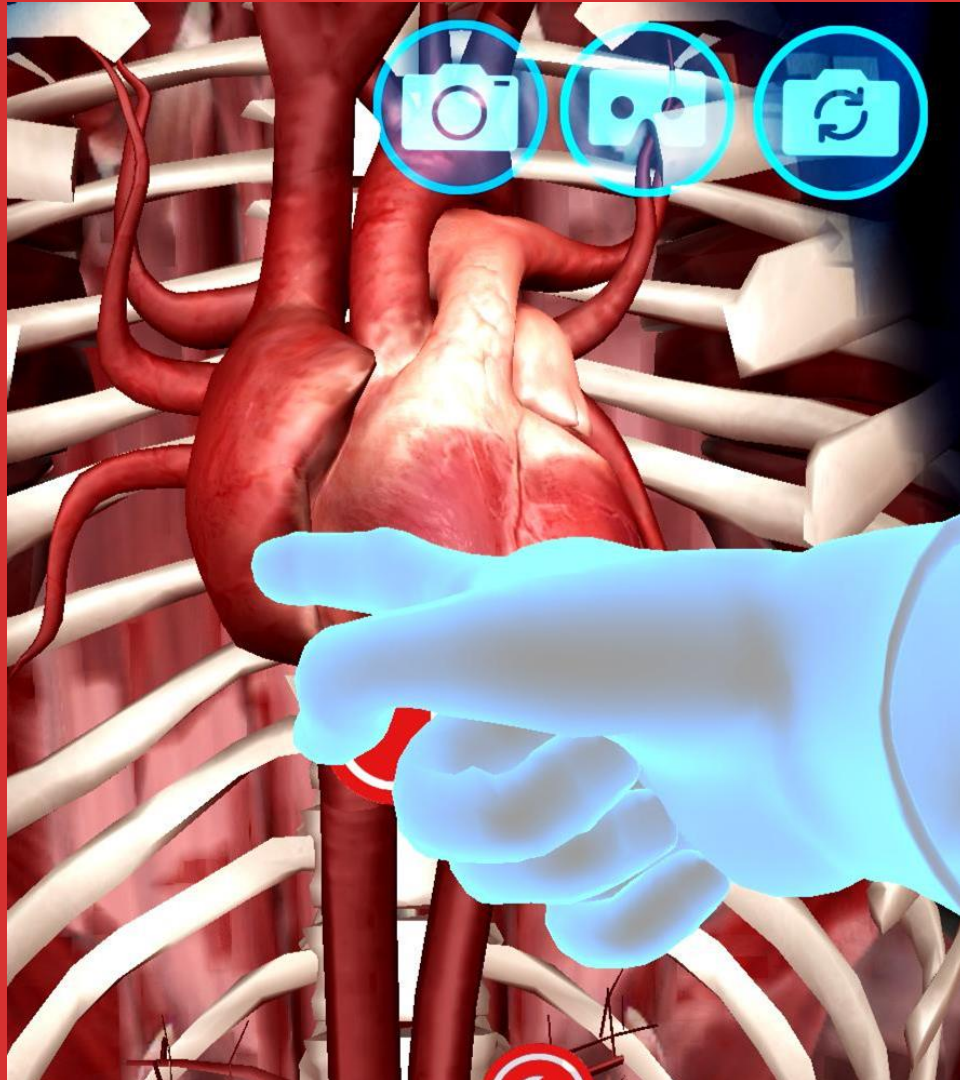
“Capillar” comes from the Greek for “hairlike”.

# Question 4

How often does the heart beat?

- A. Every time you blink
- B. 1 million times a day
- C. Every time you breath in
- D. 100,000 times a day

Your heart is busier than you, beating even when you are resting; between 60 and 100 times a minute!



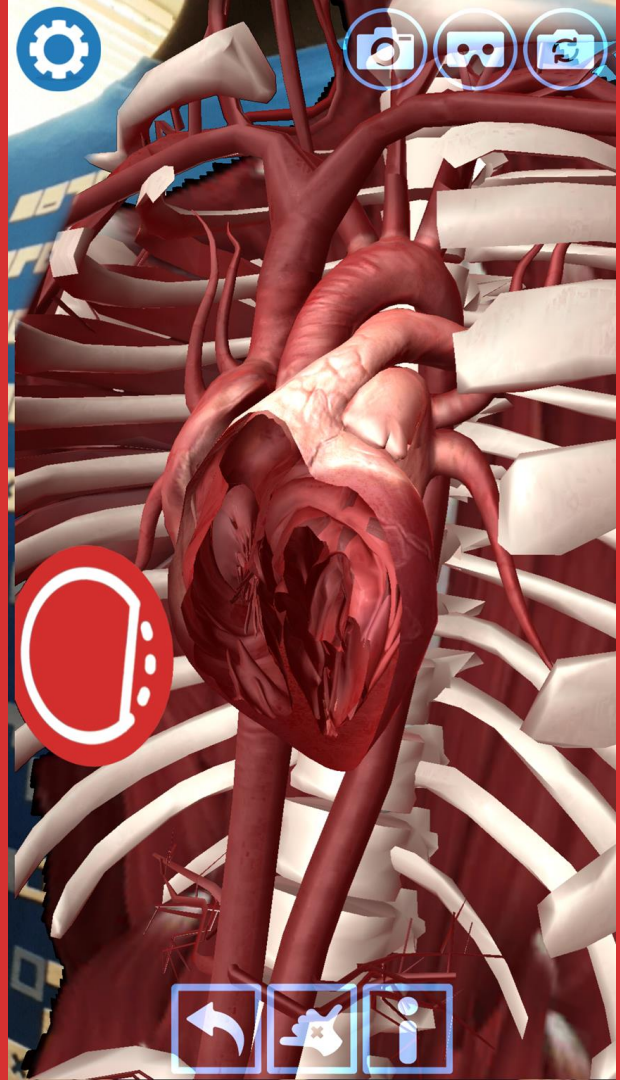


# Question 5

What is the name of the upper chambers of the heart?

- A. Ventricles
- B. Atria
- C. Valves
- D. Veins

Atria is also the name used for large open spaces in a building, and comes from the Latin “Atrium”, which was the word for the central court in a house.



# Question 6

What stops the blood in your heart from flowing the wrong way?

- A. Gravity
- B. Pistons
- C. Valves
- D. Cogs

Just like in a bicycle pump, valves control the direction of blood flow in the heart.



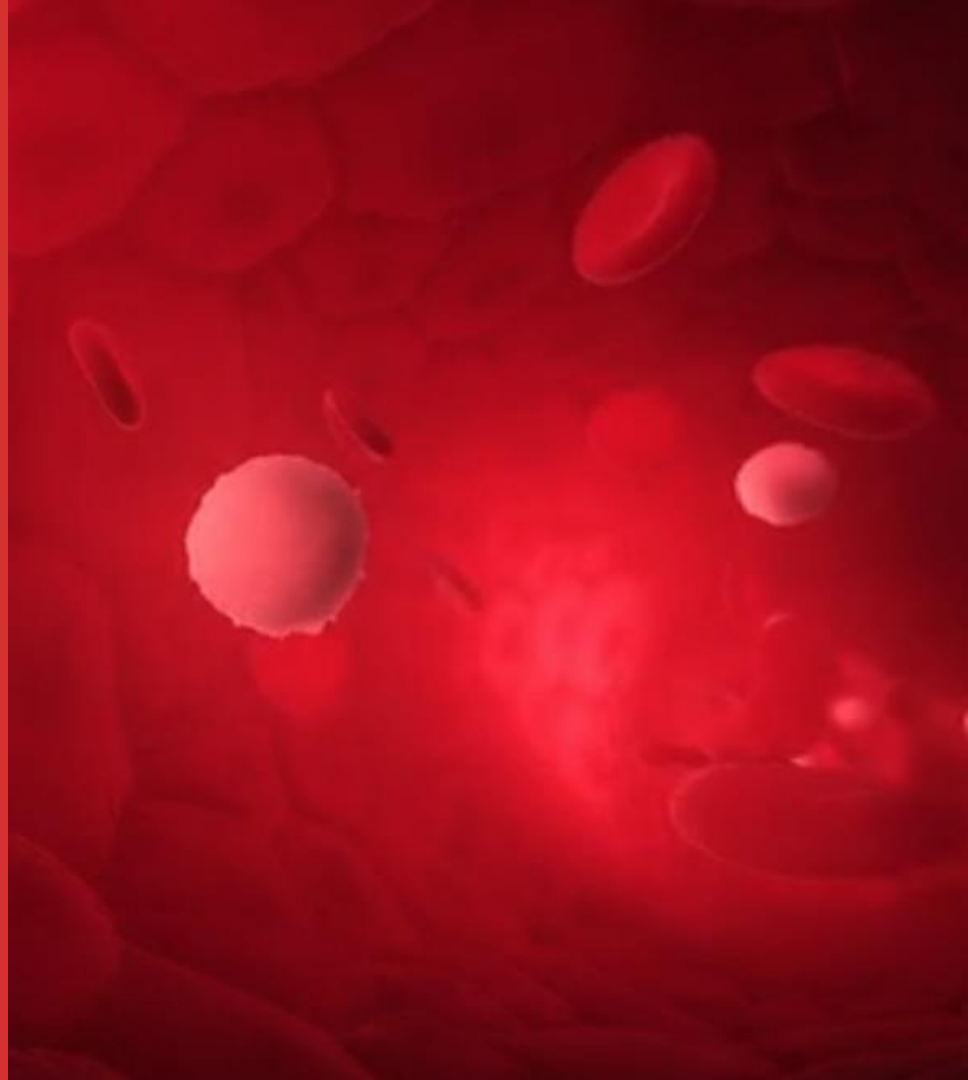


# Question 7

What do red blood cells carry?

- A. Carbon dioxide to the lungs
- B. Nutrients to the muscles
- C. Instructions from the brain
- D. Oxygen around the body

Red blood cells carry oxygen to tissues and organs in the body, and that oxygen is used to clean the blood.



# Question 8

Which statement is correct?

- A. All blood that returns to the heart is deoxygenated
- B. Exchange of carbon dioxide to the lungs occurs in the bronchioles
- C. Blood flows away from your heart via arteries
- D. None of the above

Veins carry blood back to the heart; they are darker than arteries as they carry back deoxygenated blood. Arteries are much thicker to contain the high pressure of blood pumping through to your entire body.



# Question 9

Which of the following carries waste away from tissues and organs?

- A. Platelets
- B. White blood cells
- C. Plasma
- D. Red blood cells

Plasma makes up for approximately 55% of total blood volume. Plasma is also the coolest name in the body! It is a clear, straw-coloured fluid. It also helps carry the blood cells around your body.





# Question 10

The LUB-DUB sound that the heart makes is caused by:

- A. Flow of blood into the heart
- B. Push of blood out of the heart
- C. Closing of the valves
- D. Opening of the valves

A defective valve can cause a hissing sound when a stream of blood squirts backwards through the valves.

